



Audio-Technica LINK Simulator

Operation Guide

Introduction

About Audio-Technica LINK Simulator

This is a web application that simulates device configuration and power supply for Audio-Technica LINK systems. Based on the configuration of the devices you want to connect, you can perform power calculations and determine whether additional LINK extenders are required.



- The simulation results of this application are for reference only. When actually building the system, operate it only after thoroughly verifying it yourself.



- Some of the products simulated in this application may not be available in your region or country. For compatible products, contact your local Audio-Technica dealer.

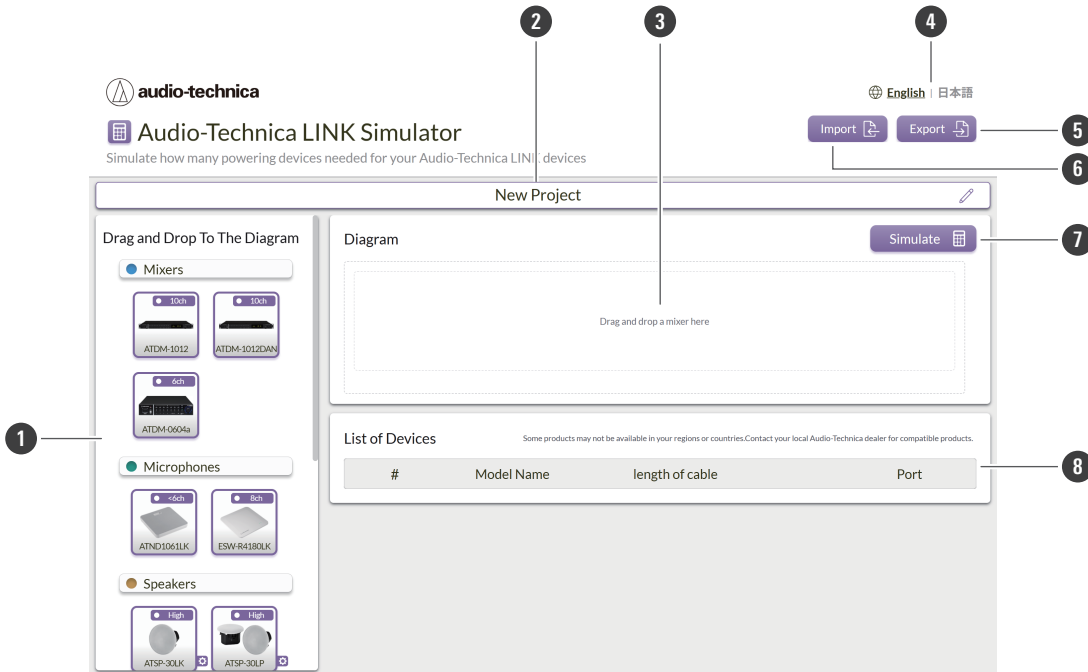
Recommended environment

Audio-Technica LINK Simulator is designed for use with computers. It cannot be used with tablets or smartphones.

Item	Environment
OS	Microsoft Windows 11 macOS Sequoia macOS Sonoma
Web browser	Microsoft Edge Google Chrome Safari

Overview of the screen

Main screen



1 Device selection area

Select the device and other items required for the simulation.

Item	Description
Mixers	Select the mixer to use.
Microphones	Select the microphone to use.
Speakers	Select the speaker to use.
Control Panels	Select the control panel to use.
Cable Type	Select the specification of the LAN cable to be used.
Unit Preference	Switch the display unit between meters and feet.
Add Powering Devices	Select the extender you want to use and simulate its placement and quantity.

2 Project name

Display the project name. Click the pencil icon on the right to edit the project name.

3 Diagram display area

Drag and drop the devices selected in the device selection area to display them.

4 Language selection

Select the display language.

5 Export button

Output simulation results in JSON or CSV format, or print them.

6 Import button

Import the JSON-formatted file exported from the application.

Overview of the screen

7 Simulate button

Based on the devices displayed in the diagram display area, simulate whether the extenders necessary for correct power supply can be provided, or whether the already selected extenders can provide correct power supply.

8 Device list area

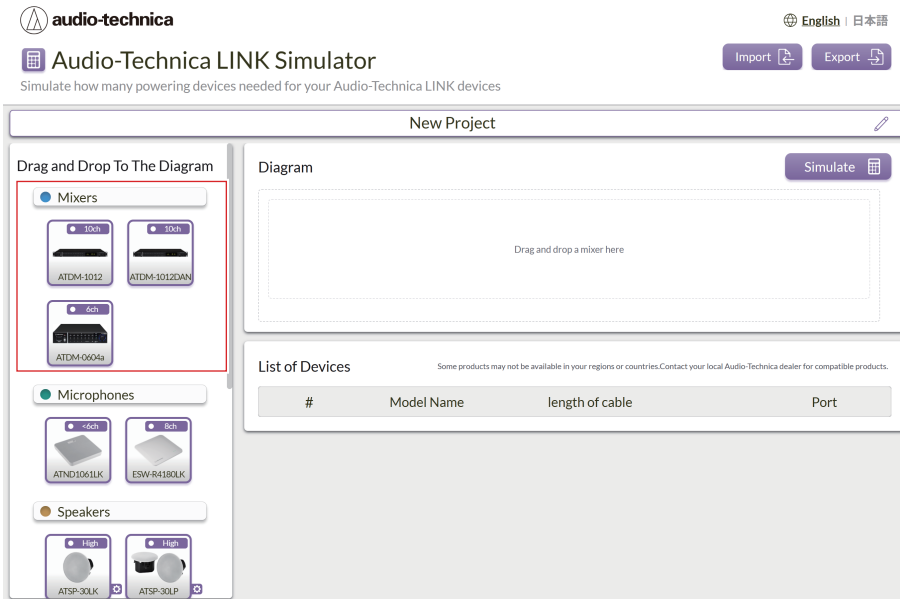
Display the selected devices and simulation results.

How to use

Simulating

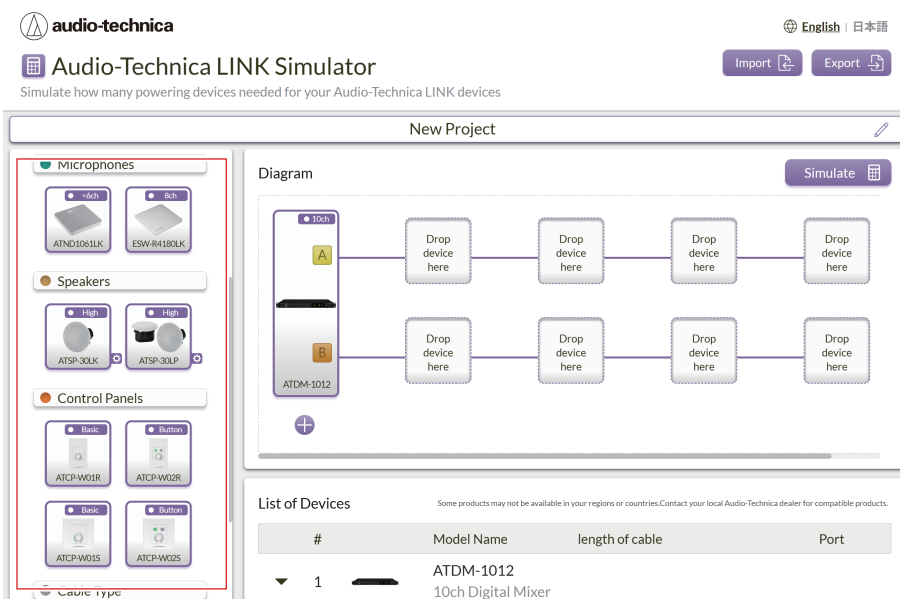
1 Drag and drop the mixer you want to use from the device selection area to the diagram display area.

- You can also add multiple units.



2 Drag and drop the microphone, speaker, and control panel you want to use from the device selection area to the diagram display area.

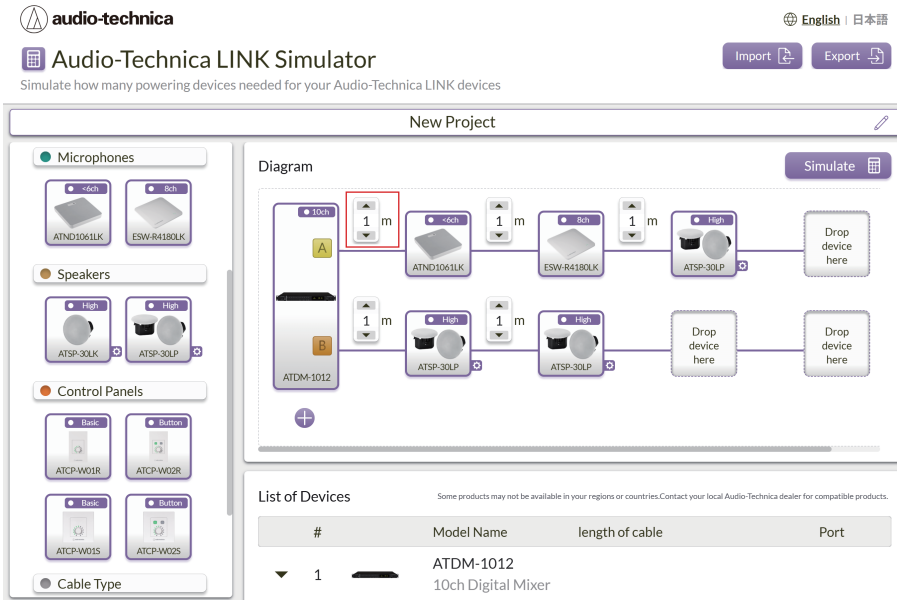
- You can also rearrange devices or add them between devices using drag and drop.
- To delete a device, move your cursor over the icon of the device you want to delete and click the x icon displayed in the upper right corner.



How to use

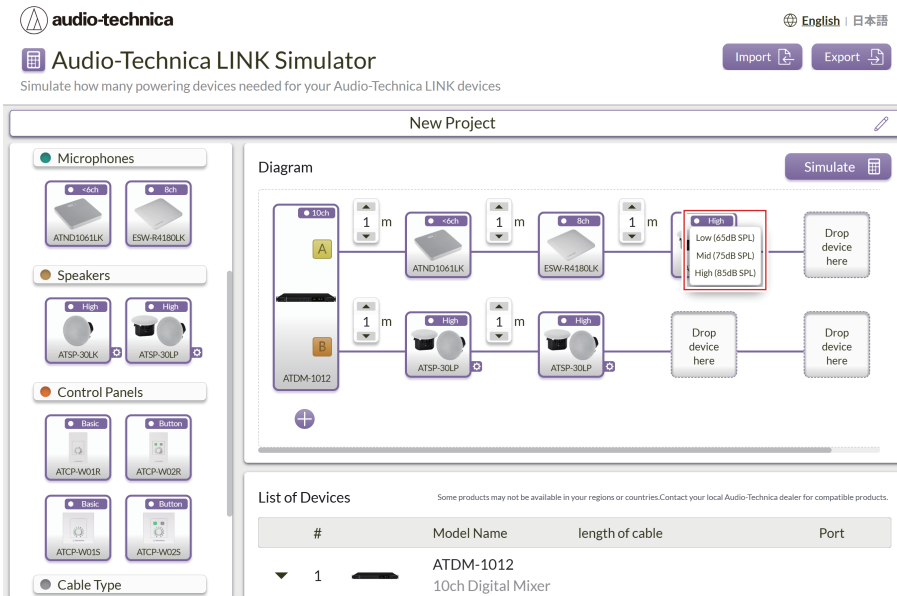
3 A cable length input field will appear between the devices; set the cable length there.

- Click the triangle icons above and below the number, or enter the length directly to set the cable length.



4 Click the gear icon displayed at the bottom right of the speaker and set the volume level from three modes.

- Set the volume level expected in the actual usage environment, as the speaker's voltage changes depending on the sound pressure it outputs. This will allow you to simulate more accurately.

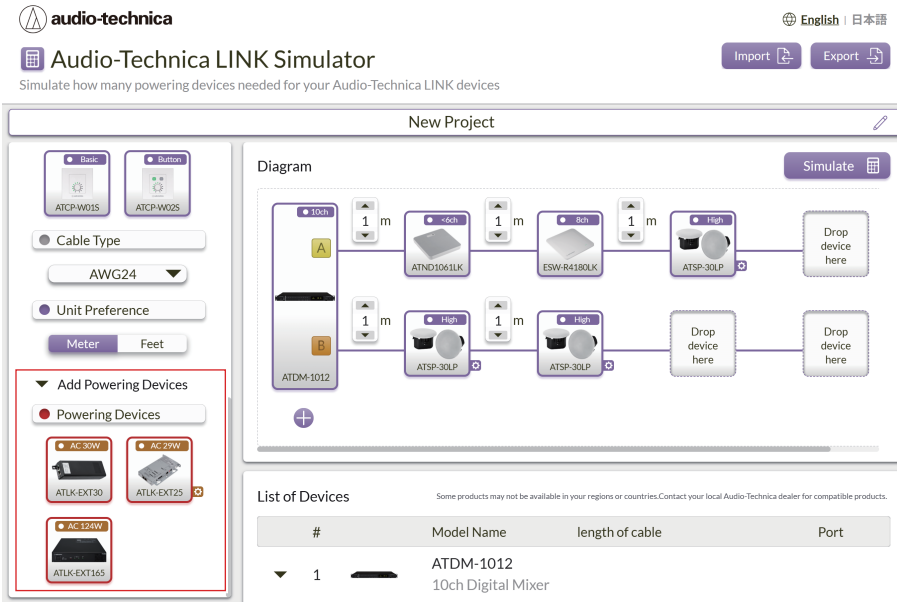


Item	Description
Low (65 dB SPL)	Suitable for use in large spaces and noisy environments.
Mid (75 dB SPL)	Suitable for use as background music.
High (85 dB SPL)	Suitable for use with speeches at meetings and similar occasions.

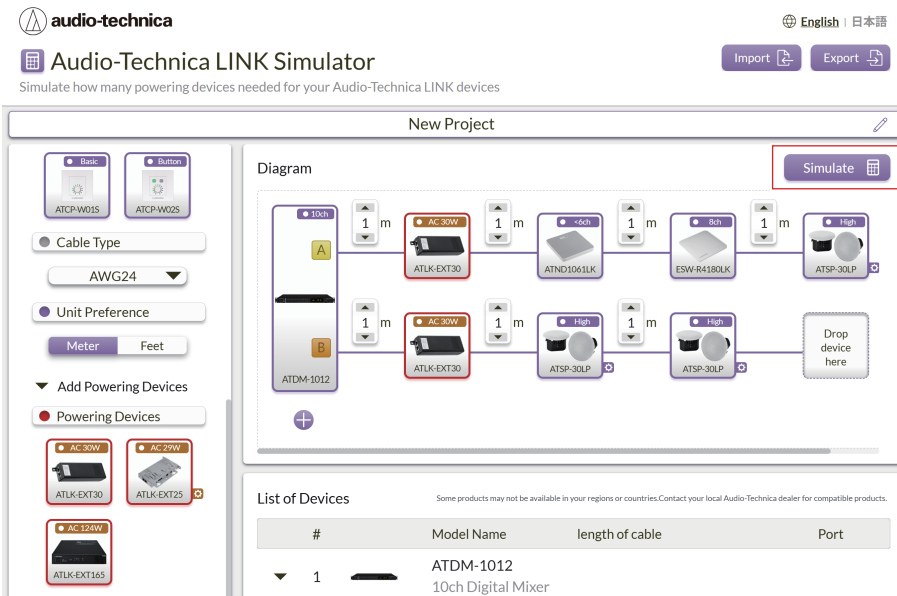
How to use

5 Click "Add Powering Devices" in the device selection area, then drag and drop the extender you are considering using into the diagram display area.

- You can also run simulations without placing extenders and have extenders recommended.
- The power supply for ATLK-EXT25 varies depending on the source. Click the gear icon in the lower right corner to set the power supply.



6 Once the device placement and configuration are complete, click the Simulate button.



» The simulation will run. If there are no issues with the power supply, a message indicating that the power supply is sufficient will appear. Click "OK." If the power supply is insufficient, a message indicating a power shortage will be displayed. To have an extender recommended that meets the conditions, click "Yes." To reposition it yourself, click "No, Thanks."

Checking the device list

You can check the selected device and simulation results.

The screenshot shows the Audio-Technica LINK Simulator interface. The main area displays a 'List of Devices' table. Callouts 1 through 5 point to specific elements in the table:

- 1: Product image
- 2: Model name
- 3: Power usage rate at the end of each port
- 4: Port of the connected mixer
- 5: Cable length

#	Model Name	length of cable	Port
1	ATDM-1012 10ch Digital Mixer		
	ATLK-EXT30 Powering Device	1 m	A
	ATND1061LK Ceiling Microphone	1 m	A
	ESW-R4180LK 8ch DECT Wireless	1 m	A
	ATSP-30LP Network Ceiling Speaker	1 m	A
	ATLK-EXT165 Powering Device	1 m	B

- 1 Product image
- 2 Model name
- 3 Power usage rate at the end of each port

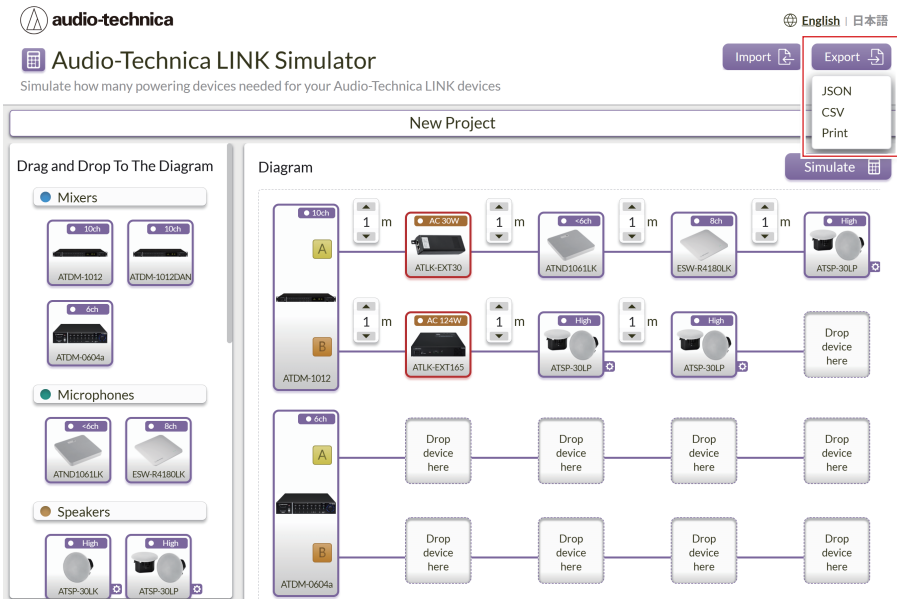
The mixer row displays the power usage rate at the end of each port.

- 4 Port of the connected mixer
- 5 Cable length

Saving simulation results

1 Click the Export button, then click "JSON" / "CSV" / "Print."

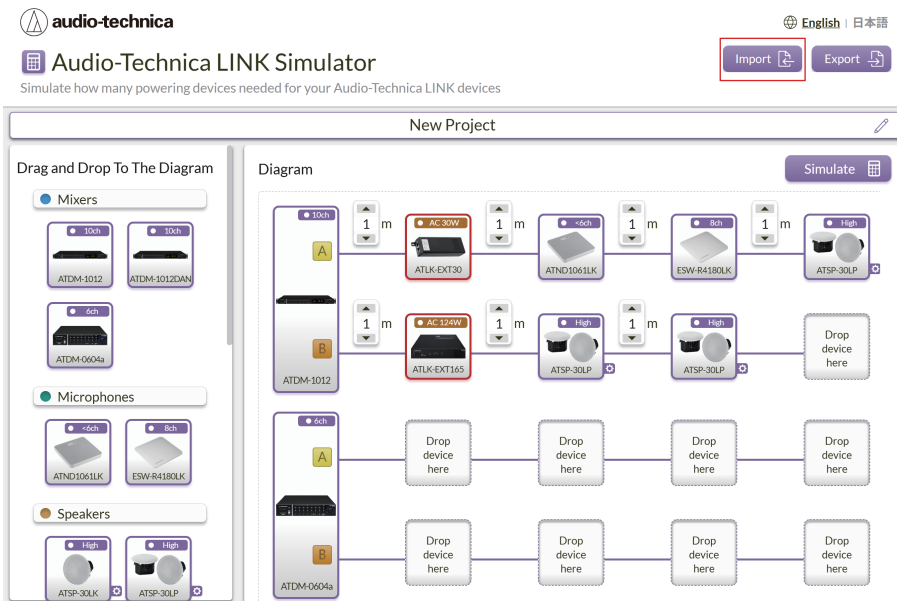
- Saving in JSON format allows you to import it into this application later.
- You can also save it in CSV format or print it.



Importing saved simulation results

1 Click the Import button and select a JSON file.

- Only JSON format files can be imported.



株式会社オーディオテクニカ

〒194-8666 東京都町田市西成瀬2-46-1
www.audio-technica.co.jp

Audio-Technica Corporation

2-46-1 Nishi-naruse, Machida, Tokyo 194-8666, Japan
www.audio-technica.com
©2025 Audio-Technica Corporation
Global Support Contact: www.at-globalsupport.com

ver.1 2025.12.01