



ARTIST SERIES™



Thank you for purchasing this product. Before using the product, read through the user manual to ensure that you will use the product correctly. Please keep this manual for future reference.

Features

- Ideal for drummers, keyboard players, guitarists or anyone requiring hands-free operation
- Low-visibility headband provides stable, comfortable fit
- Pivot-mounted flexible mic boom descends from left or right side
- Cardioid polar pattern improving isolation of desired sound source
- Rugged design and construction for reliable performance
- ATM75cW equipped with cW-style locking and equipped with ATM75cH cH-style screw-down 4-pin termination for Audio-Technica wireless systems

Notes on use

ATM75cW and ATM75cH wireless versions do not contain power module and includes clothing clip and metal-frame pop filter only. 1.4 m cable terminated with locking 4-pin connector. The connector is also compatible with Audio-Technica cW and cH type body-pack transmitters.

For maximum stability and minimum visibility, the adjustable headband should be worn around the back of the head, with each cushioned support pad resting on the temple in front of the ear. The cable should remain clipped to the headband, with some slack at the boom connection.

Avoid leaving the microphone in the open sun or in areas where temperatures exceed 43°C for extended periods. Extremely high humidity should also be avoided.

Safety precaution

Although this product was designed to be used safely, failing to use it correctly may result in an accident. To ensure safety, observe all warnings and cautions while using the product.

Cautions for the product

- Do not subject the product to strong impact to avoid malfunction.
- Do not disassemble, modify or attempt to repair the product.
- Do not handle the product with wet hands to avoid electric shock or injury.
- Do not store the product under direct sunlight, near heating devices or in a hot, humid or dusty place.

Specifications

Element	Fixed-charge back plate, permanently polarized condenser
Polar pattern	Cardioid
Frequency response	100 - 13,000 Hz
Open circuit sensitivity	-51 dB (2.8 mV) re 1V at 1 Pa
Impedance	200 ohms
Maximum input sound level	132 dB SPL, 1 kHz at 1% T.H.D.
Dynamic range (typical)	96 dB, 1 kHz at Max SPL
Signal-to-noise ratio	58 dB, 1 kHz at 1 Pa
Voltage range	2.5-10V
Weight	60 g
Dimensions	Microphone: 20.4 mm diameter Headset: 120.0 mm nominal at widest point, 80.5 mm boom
Output connector	cW-type (ATM73cW) / cH-type (ATM73cH)
Cable	1.4 m long (permanently attached to microphone), 2.8 mm diameter, 2-conductor shielded cable (termination dependent)
Included accessories	AT8139L large windscreen; AT8139S small windscreen; AT8439 cable clip.

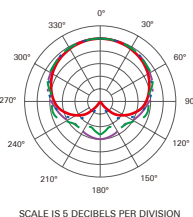


• 1 Pascal = 10 dynes/cm² = 10 microbars = 94 dB SPL

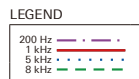
* Typical, A-weighted, using Audio Precision System One.

For product improvement, the product is subject to modification without notice.

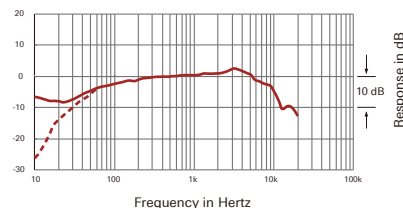
Polar pattern



SCALE IS 5 DECIBELS PER DIVISION



Frequency response



LEGEND



Connection procedure

Cable Terminations

ATM75cW – Terminated with locking 4-pin connector for use with A-T UniPak™ body-pack transmitters



	Pin 1	Pin 2	Pin 3	Pin 4
Function	Ground / Shield	Instrument	Mic Audio	Blas + In
Wire Colour	Copper Wire	Jumper to Pin 1	Yellow	Red

ATM75cH – Terminated with locking 4-pin connector for use with A-T cH body-pack transmitters



	Pin 1	Pin 2	Pin 3	Pin 4
Function	Ground / Shield	Instrument	Mic Audio	Blas + In
Wire Colour	Copper Wire	Jumper to Pin 1	Yellow	Red

Audio-Technica Corporation

2-46-1 Nishi-naruse, Machida, Tokyo 194-8666, Japan

©2017 Audio-Technica Corporation

Global Support Contact: www.at-globalsupport.com



ARTIST SERIES™



感谢您购买本产品。在使用产品之前，请全文浏览本用户手册以确保您将正确地使用本产品。请妥善保管本手册，以供将来参考。

产品特点

- 专为鼓手、键盘手、吉他手及其他乐手提供免提型话音收音
- 提供舒适及不显眼的设计，及近距离收音
- 采用可自由改变电线位置的设计，左右方向都可使用
- 心形指向性收音，能有效减低旁边及后方的杂音干扰
- 坚固的设计和结构，性能可靠
- ATM75cW 配以锁固式 cW 型4针话筒输出端子，ATM75cH 配以螺旋式 cH 型4针话筒输出端子，适用于铁三角 Audio-Technica cW 或 cH 型的盒式无线发射机

使用注意事项

ATM75cW 和 ATM75cH 无线版本不带供电模组，但提供领带夹和金属网防风罩，长1.4m音频线输出，可配置于所有铁三角 Audio-Technica cW 或 cH 型的盒式无线发射机中。

为了获得更好的稳定性和更佳的隐藏性，配戴时应把可调节式头环戴在头的后方，每个支撑衬垫贴在太阳穴的位置上。连接线应夹持在头环上，并与话筒杆之间的连接预留一些松弛长度。

把话筒暴露于高温中可能导致输出电平逐渐及永久性减弱，应避免将话筒留在日晒的地方或长时间置于温度超过43°C的地方，而极高湿度也应避免。

安全预防措施

虽然本产品采用安全设计，但使用不当仍可能发生事故。为了确保安全，使用本产品时请注意全部警告和提醒。

本产品注意事项

- 切勿让本产品遭受强烈冲击，以避免发生故障。
- 切勿拆开、改装或尝试维修本产品。
- 切勿用湿手握持本产品，以免触电或受伤。
- 切勿将本产品存放在阳光直射的地方、加热装置附近或者炎热、潮湿或多尘的地方。

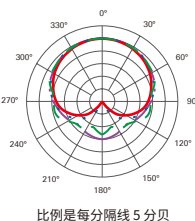
规格

元件	固定充电背板，静电型电容式
指向性	心形指向性
频率响应	100 - 13,000 Hz
开路灵敏度	-51 dB (2.8mV) 以 1V 于 1Pa
输出阻抗	200 欧姆
最大承受声压	132 dB 声压, 1 kHz 于 1% T.H.D.
动态范围 (典型)	96 dB, 1 kHz 于最高声压
信噪比	58 dB, 1 kHz 于 1 Pa
电压范围	2.5 - 10V
重量	60 克
尺寸	收音头: 直径 20.4 mm 头环: 宽度 120.0 mm, 话筒杆 80.5 mm
输出端子 (供电模组)	cW 型4针 (ATM75cW) / cH 型4针 (ATM75cH)
连接线	长 1.4 米 (固定连接于话筒), 直径 2.8 mm , 2芯屏蔽式连线并配置连接端子 (连接端子类型视乎不同型号)
附带配件	AT8139L 大型防风棉; AT8139S 小型防风棉; AT8439 连接线衣领夹

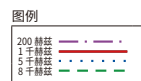


* 1 帕 = 10 达因 / 平方厘米 = 10 微巴 = 94 dB SPL
* 典型, A 计权, 使用 Audio Precision System One
因产品改进, 本产品会随时改装, 恕不另行通知。

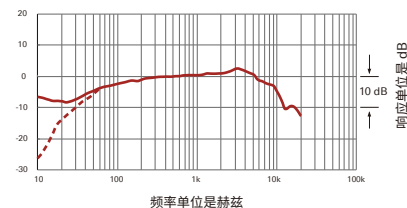
指向性



比例是每分贝 5 分贝



频率响应



连接步骤

接线端子

ATM75cW - 以锁固式4式针端子，使用于铁三角 A-T UniPak® 盒式无线发射机



	针脚1	针脚2	针脚3	针脚4
功能	地线 / 屏蔽	乐器	话筒音频	偏压+ 输入
导线颜色	裸铜线	与 针脚1 跳线	黄色	红色

ATM75cH - 以锁固式4式针端子，使用于铁三角 A-T cH 型 盒式无线发射机



	针脚1	针脚2	针脚3	针脚4
功能	地线 / 屏蔽	乐器	话筒音频	偏压+ 输入
导线颜色	裸铜线	与 针脚1 跳线	黄色	红色